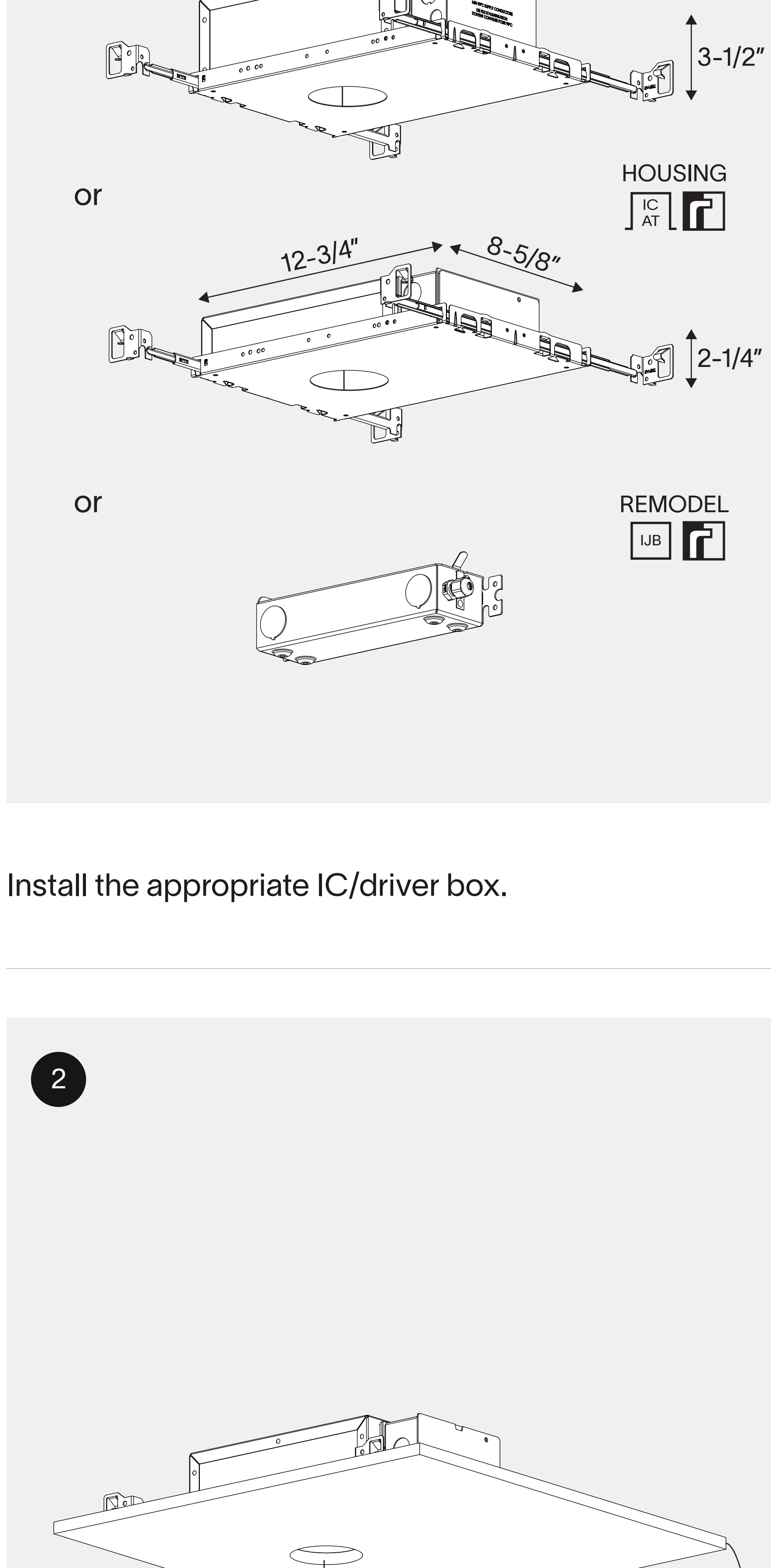
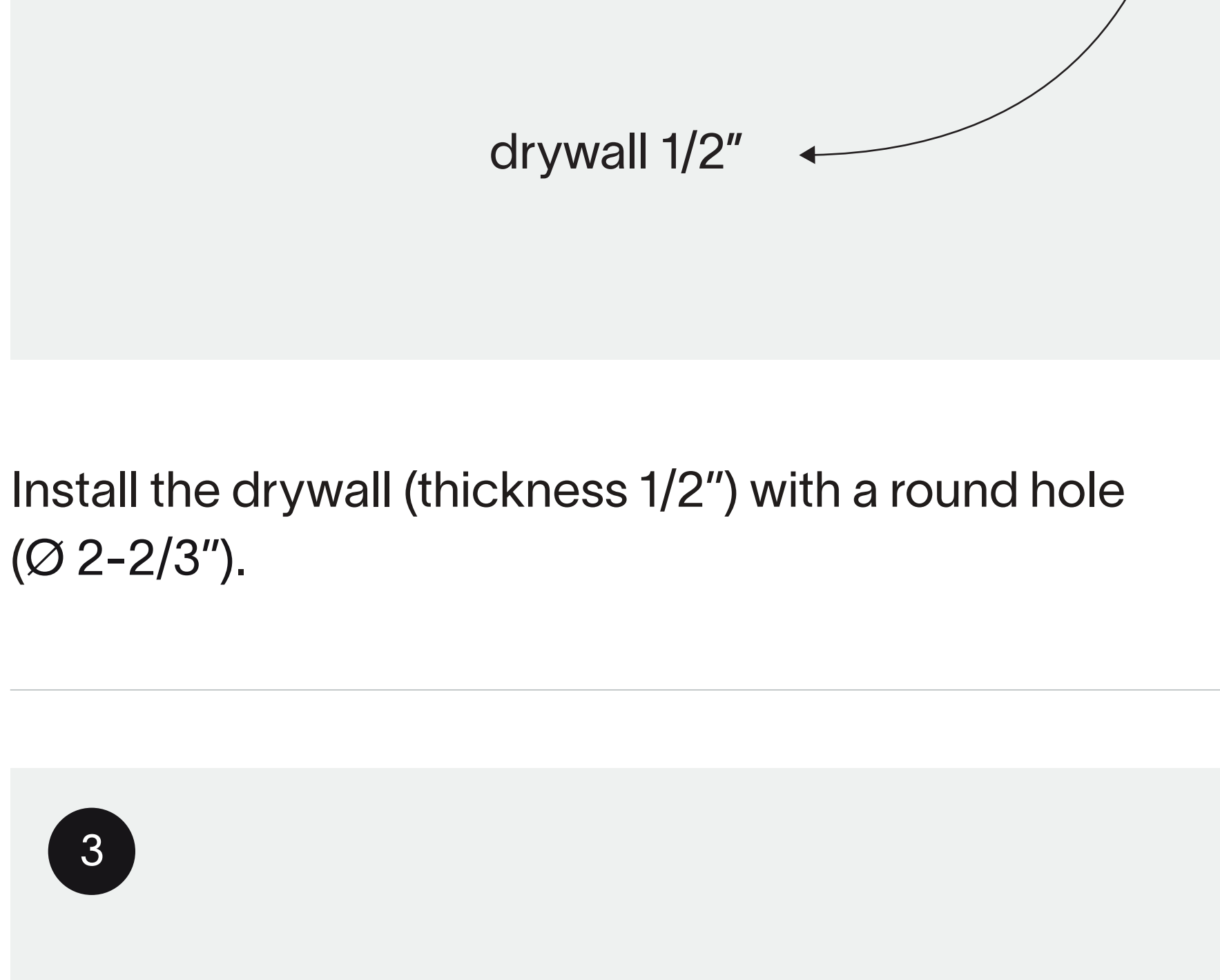


mud ring jack

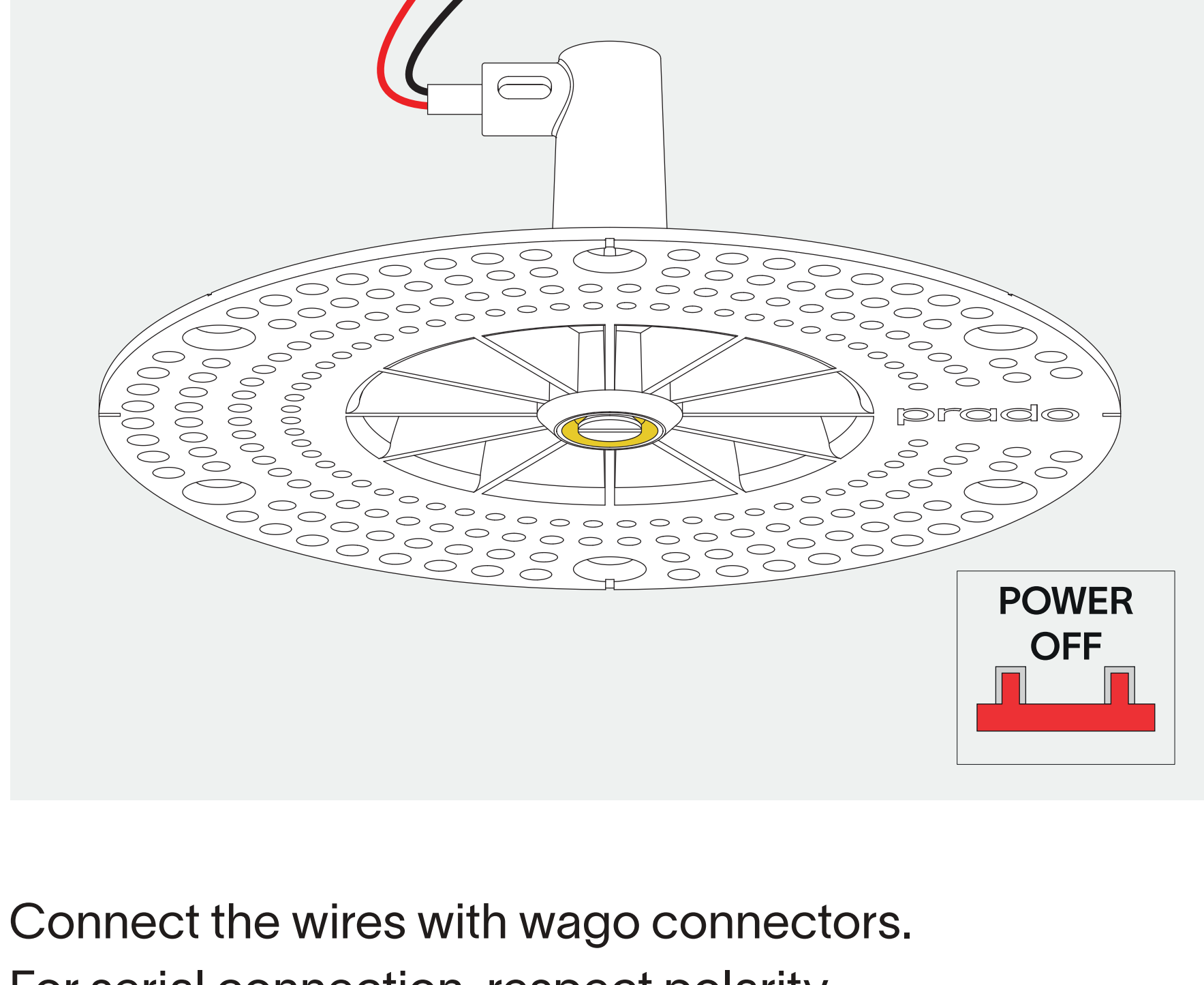
installation instruction



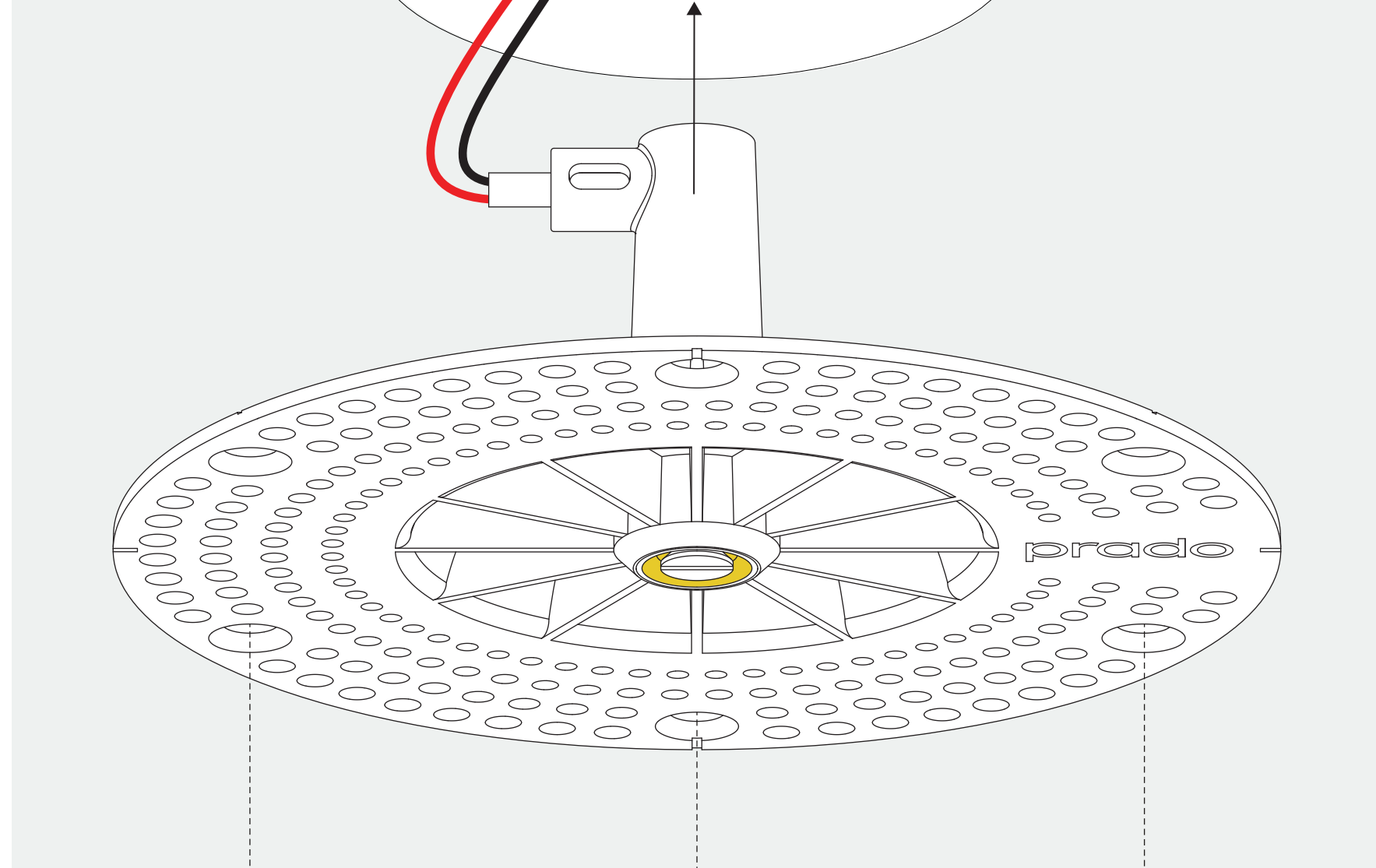
Install the appropriate IC/driver box.



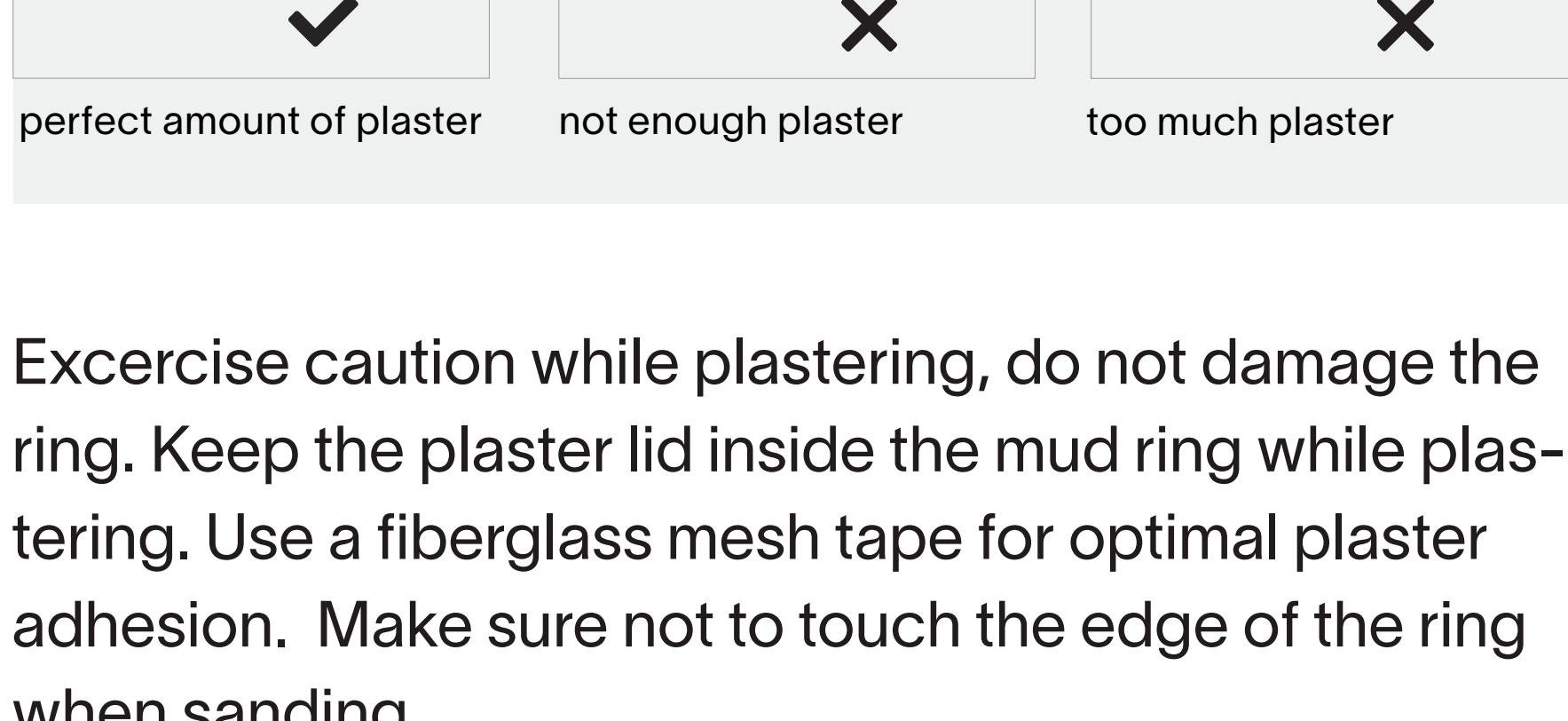
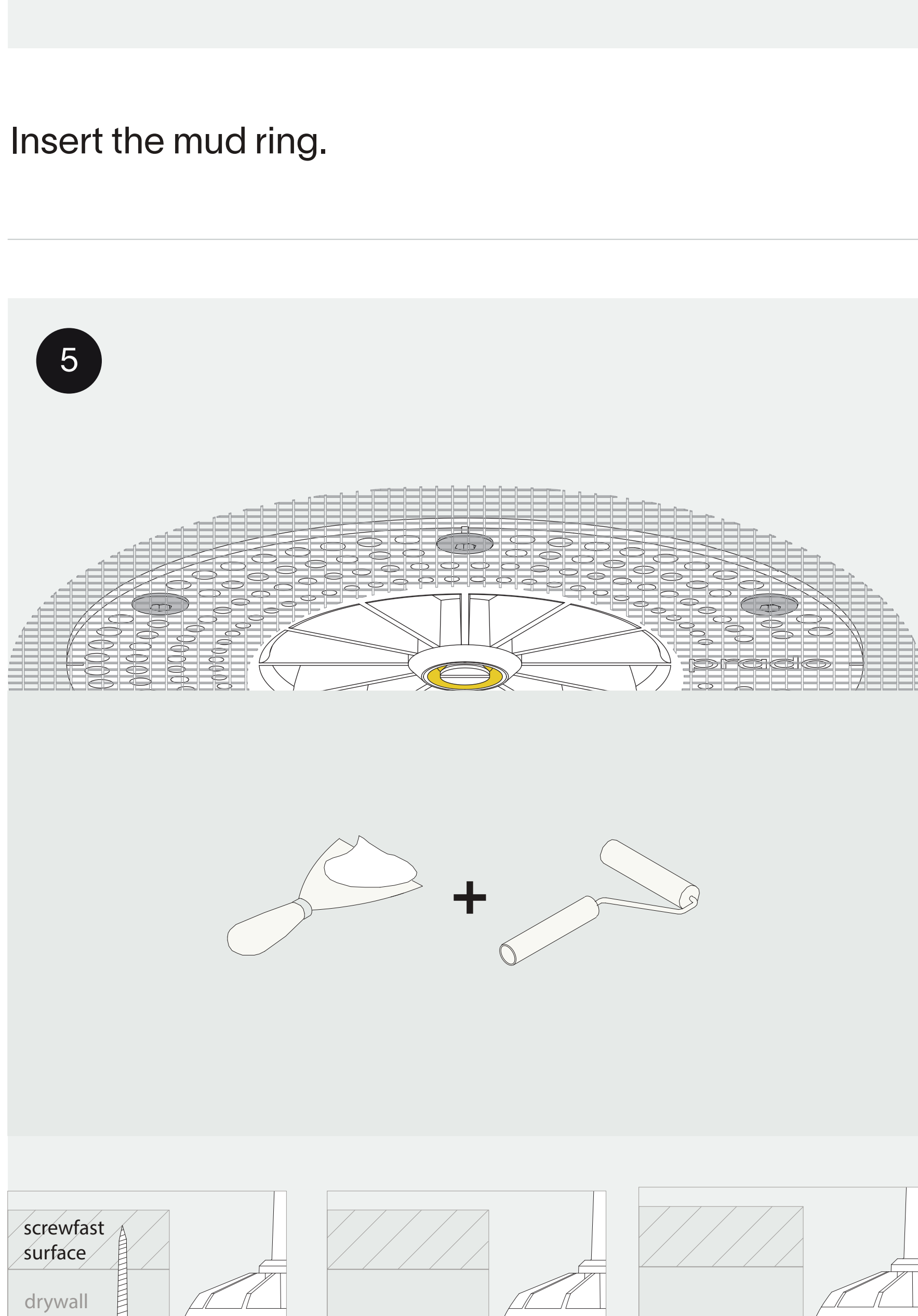
Install the drywall (thickness 1/2") with a round hole (Ø 2-2/3").



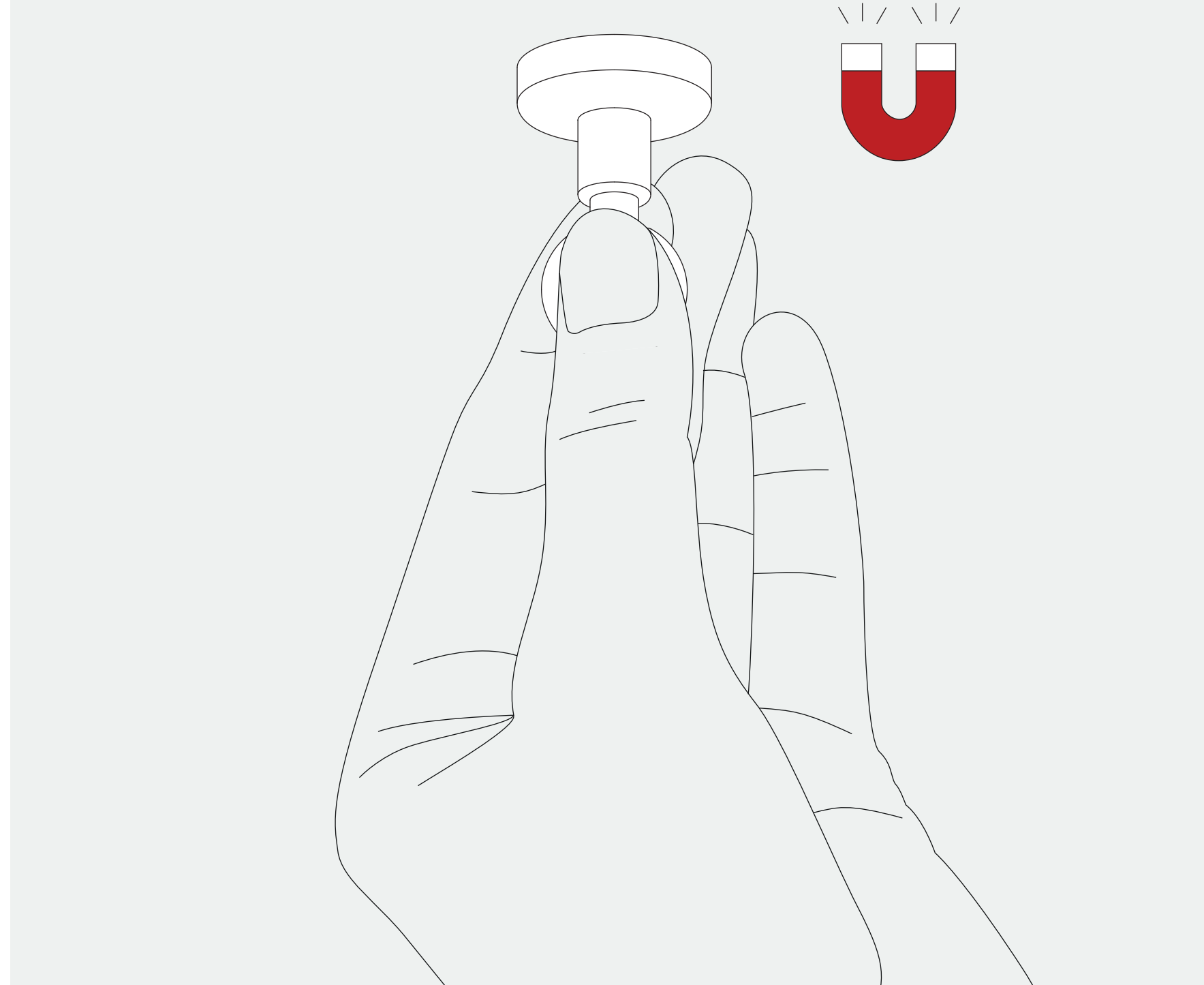
Connect the wires with wago connectors.
For serial connection, respect polarity.



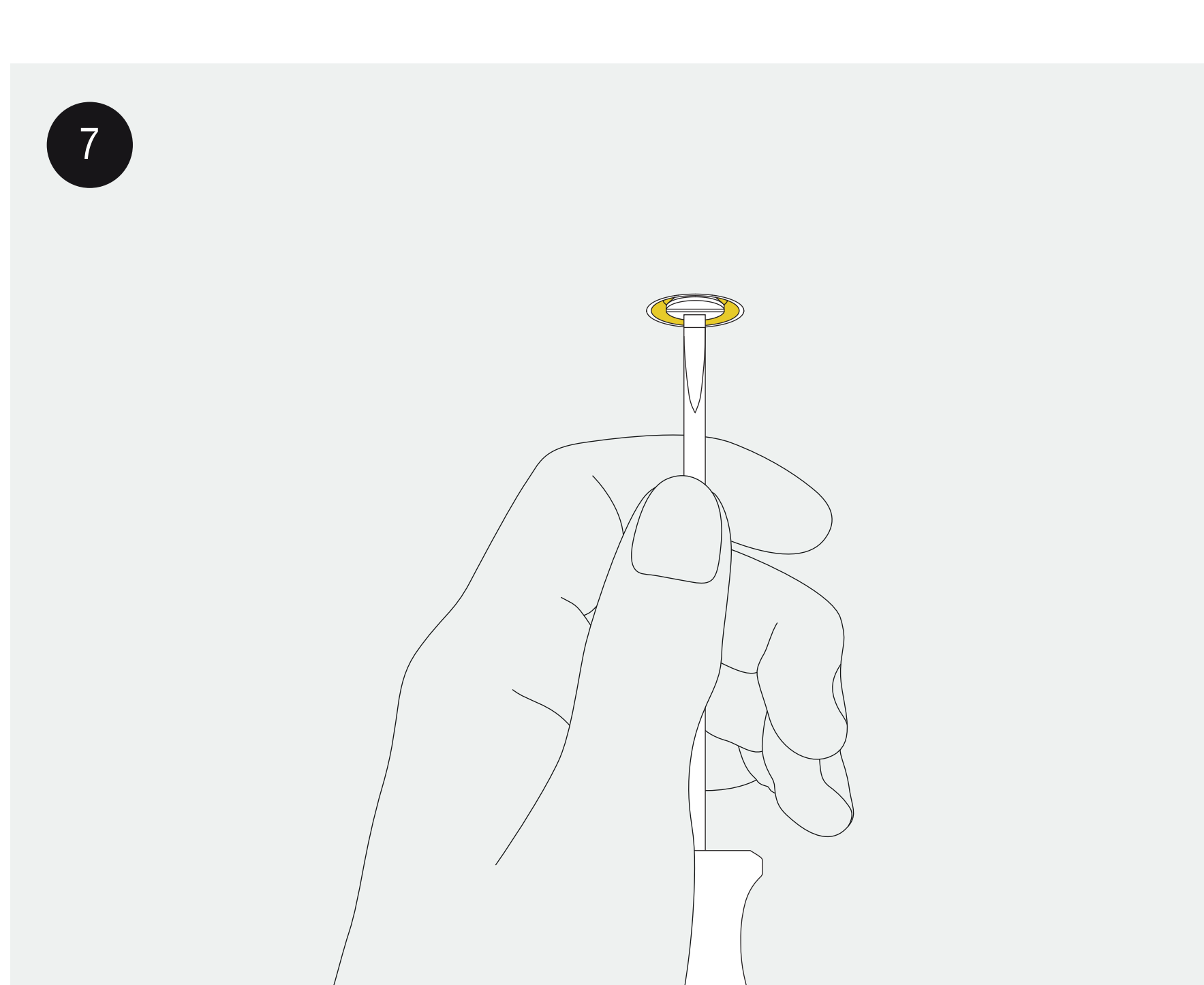
Insert the mud ring.



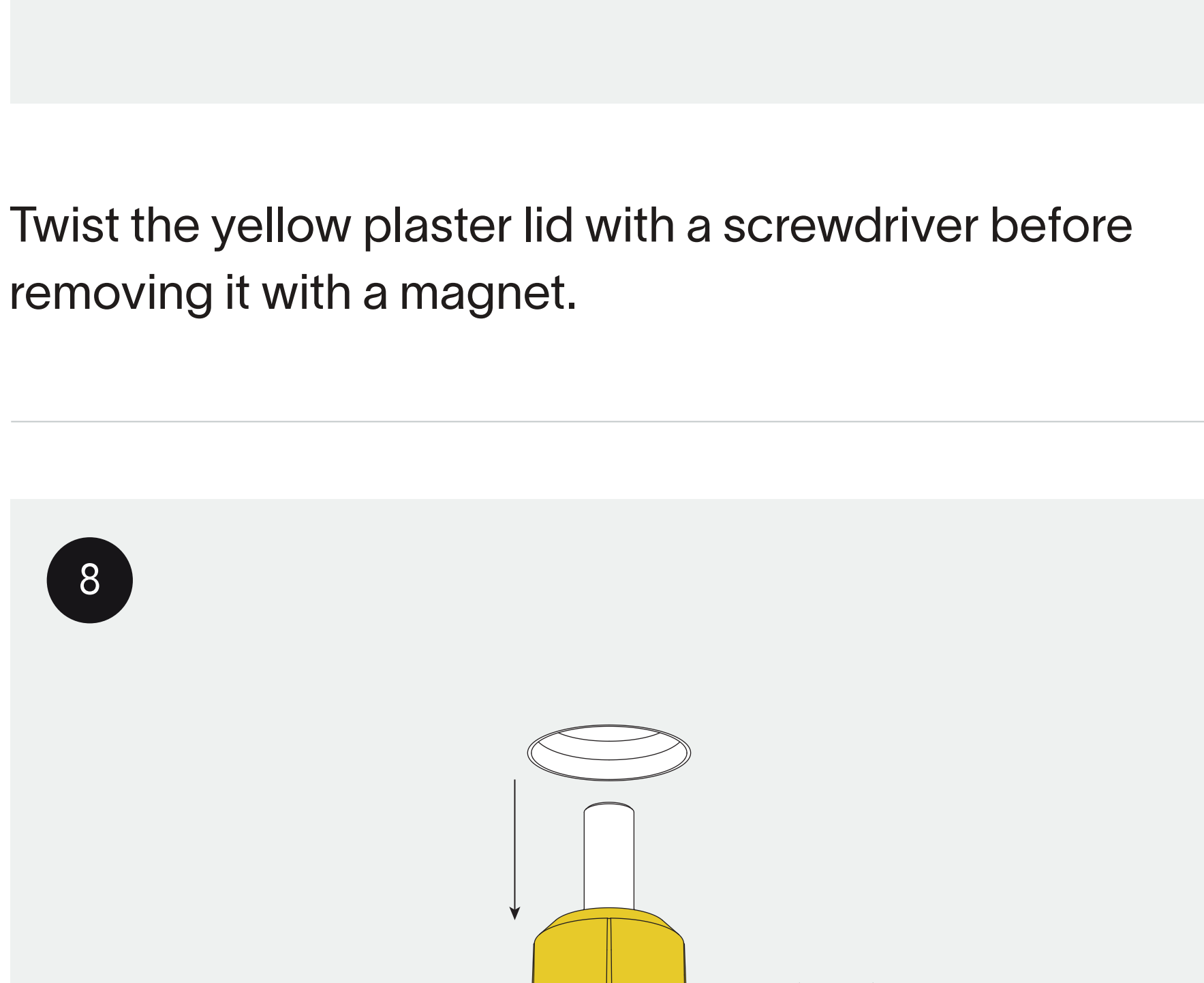
Exercise caution while plastering, do not damage the ring. Keep the plaster lid inside the mud ring while plastering. Use a fiberglass mesh tape for optimal plaster adhesion. Make sure not to touch the edge of the ring when sanding.



Carefully remove excess plaster to access the screw.
You can easily locate the jack kit by using a magnet.



Twist the yellow plaster lid with a screwdriver before removing it with a magnet.



Remove the plaster lid with a magnet before installing the fixture. Any residue needs to be removed without damaging the edges of the installation ring.
Thank you for choosing prado.

